

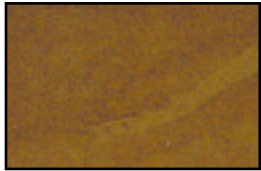
Material Science

Leather is a natural product.

Every piece of leather is unique.

Many features considered quality flaws in man-made products, add to the individual character of leather and emphasize its true value.

Connoisseurs therefore appreciate and look for nature's touch as the hallmark of genuine leather.



HORN RAKES
are acceptable if not excessive
and leave no open tissue.



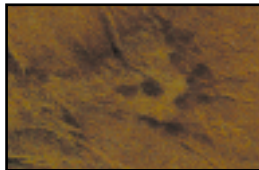
MANURE MARKS
may show very subtly
on pure aniline leathers
(natural Nappa leather).



THORN SCRATCHES
of that magnitude, with open
hide tissue will not be used on
furniture. A major quality flaw.



BRANDING MARKS
When fully healed add to the
natural, rugged look of rustic
leather furniture. (Often found
on North and South American
semi-wild cattle hides).



ABSCESS MARKS
Are not suitable for exposed
surfaces, and should be used in
hidden areas. (undersides)



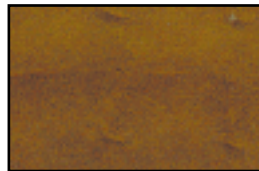
FAT WRINKLES
Are most visible in the neck area of
a hide. They are appreciated and
sought after by the connoisseur as
nature's testimony to a healthy and
well-fed animal.



CURRYCOMB TEARS
Are the sign of well cared for,
barn raised cattle and do not
constitute a leather defect.



TICK BITES
Are tiny dark spots on the leather
hide, but not the the overall quality
picture. Combined with the right
furniture design they make for an
interesting surface.



OPERATION SCARS
Constitute a weak spot within th
hide, even when fully healed, and
therefore should be excluded
from use on furniture.

Leather Care

Leather needs no special care under normal usage conditions. The occasional application of a special-purpose leather conditioner is adequate to keep upholstery leather soft and flexible.

Please follow the basic rules listed below:

- Never expose upholstered leather furniture to direct sunlight.
- Keep the humidity level consistent; do not place furniture directly in front of a radiator or near a heater or fireplace.
- Never treat the leather surface with ordinary cleansers (dishwashing liquid, all-purpose cleanser, etc.) as this will cause the leather surface (waterproofing , finish) to be permanently damaged.
- Do not use solvents, lighter fluid, spot remover, turpentine, alcohol, buffing compound, shoe cream or similar substances on the leather.
- If in doubt, ask for care instructions from your furniture dealer or directly from the manufacturer.

Recommendation:

For our smooth Nappa leather we suggest a special care emulsion which cleanses and conditions the leather gently, protects if against drying and freshens the colors.

Care Instructions for Smooth Leather (Nappa Leather)

Dust:

Furniture made of smooth leather can be dusted occasionally with a dry or moistened cloth.

Liquid Spots:

Spots should immediately be blotted carefully with a dry, absorbent paper towel or blotter paper. Do not rub the spot vigorously as it will then be pushed through the finish into the leather. Many spots disappear all by themselves in time, as they are literally absorbed by the leather.

Dried Soiled Areas:

Prepare a weak solution of neutral soap (household soap) with distilled water and wash away the spot with a soft cotton cloth. Then remove the soap solution carefully with a clean cloth moistened, again, with distilled water. Never rub too hard, or the leather surface may be damaged. After cleansing, treat the leather with a conditioning emulsion from you dealer's so that it won't stiffen and dry out.

Greasy and oily spots:

Blot large greasy spots with a paper towel. Do not treat remainder of spot for the time being, as the spot will likely be absorbed by the leather in time and become invisible.

MATERIAL SCIENCE & LEATHER CARE



Artisan Hill Leathers